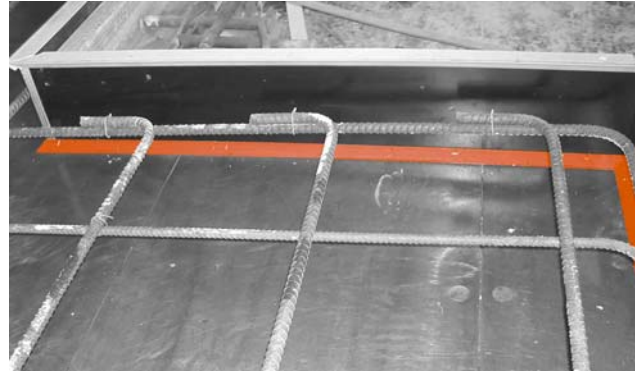


Mock & Fillet

FEATURES & BENEFITS

- Provides a uniform product in the vertical and horizontal panels and consistency between all Reids Formwork systems
- Easy installation
- Can be nailed or glued to surface
- Non swelling, water resistant
- Multiple use



APPLICATIONS

- Mock is used to create a false joint detail on the panel face
- Fillet is used to create chamfer on panel edges

PRODUCT CODES / PACKAGING

Product Code	Description	Order QTY
Fillet10S-NEW	Solid Fillet 10 x 10 x 15 (Yellow) 3m lengths	Each
Fillet15S-NEW	Solid Fillet 15 x 15 x 21 (Pale Orange) 3m lengths	Each
Fillet15	Hollow Fillet 15 x 15 (Grey) 4m lengths	Per metre
Mock-NEW	Mock Joint 15 x 15 x 40 (Pale Orange) 4m lengths	Each

