

Grout Sleeves

GROUT SLEEVES

Reid® Grout Sleeves offer a splicing solution for reinforcing bars ensuring full strength splices are achieved in critical and plastic hinge zones. Reid® Grout Sleeves eliminate the restrictions of corrugated ducts to splice reinforcing bars, when there is a possibility that the surrounding concrete may crack and crumble.

FEATURES

- Ensures bar strength continuity without the presence of surrounding concrete.
- May be used in critical stress zones.
- Cast from ductile iron for durability.
- Designed for precast column and wall panel connections.
- Easy to accurately set in position with simple to use setting hardware.
- No overlapping of bar is required.
- New 12mm Grout Sleeve with oval cavity increases positioning tolerances.
- Considerable savings in grout and time compared to corrugated ducts.
- Shorter embedment depths means easier placement.
- Secure full strength splicing of reinforcing bars.
- Well proven, used extensively in major constructions.

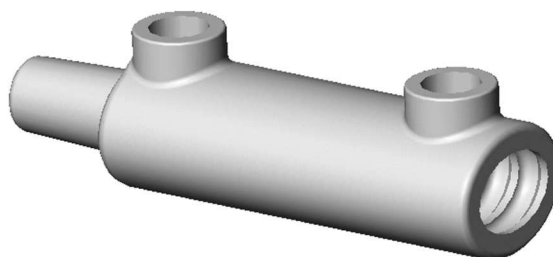
GROUT SETTING HARDWARE

Setting hardware consists of a special rubber sealing bung with a M8 bolt for locating and sealing the grout sleeve against shuttering for casting in place (refer to drawing over page).

Code	Thread Length	Thread Diameter	Rubber Plug OD
RB12GSSET	80mm	M8	28-40
RB16GSSET	80mm	M8	32
RB20GSSET	80mm	M8	40
RB25GSSET	80mm	M8	48
RB32GSSET	80mm	M8	55

GROUT SLEEVE SPECIFICATION

Code	Overall Length mm	Thread Depth mm	Body ID mm	Body OD mm	Norm Grout Vol. ml	Grout Hole Diam mm	Embedment Min. mm	Embedment Max. mm	Weight kg
RB12GS	200	45	28-40	46-58	150	21	120	150	1.1
RBA16GS	240	47	32	50	200	21	140	190	1.4
RB20GS	290	55	40	60	350	21	174	224	2.3
RB25GS	360	78	48	70	550	21	234	274	3.7
RB32GS	445	109	55	75	746	26	280	320	7.34



RB12GS

GROUT

General purpose grouts with a 65Mpa (28 day) compressive strength, used in a flowable consistency mixed as per manufacturer's instructions, will achieve full bar strength. The performance of Reid® Grout Sleeves have been tested and proved by Opus International Consultant's Auckland Testing Laboratory using Fosroc Conbextra GP, Sika Grout 212 and MBT 830 grout products.

To specify:

Reid® - 25KGCONGP - 25kg General Purpose Grout

PROJECT REFERENCES

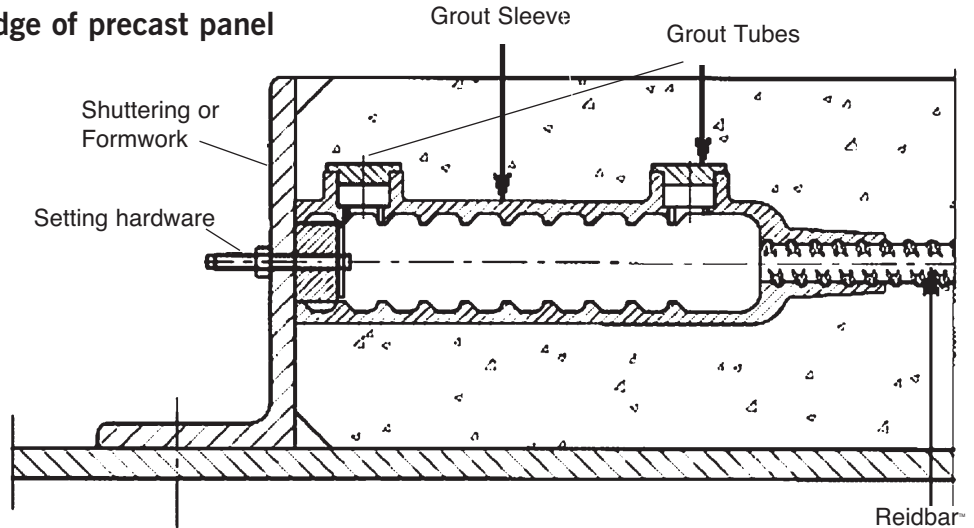
- The Park Viaduct Apartments – Auckland
- Sky City Convention Centre – Auckland
- Spencer on Byron – Takapuna
- Sanctum Apartments – Wellington
- Cathedral Junction Apartments – Christchurch
- Tuam St Apartments – Christchurch
- Scene One Apartments – Auckland

Grout Sleeves

INSTALLATION

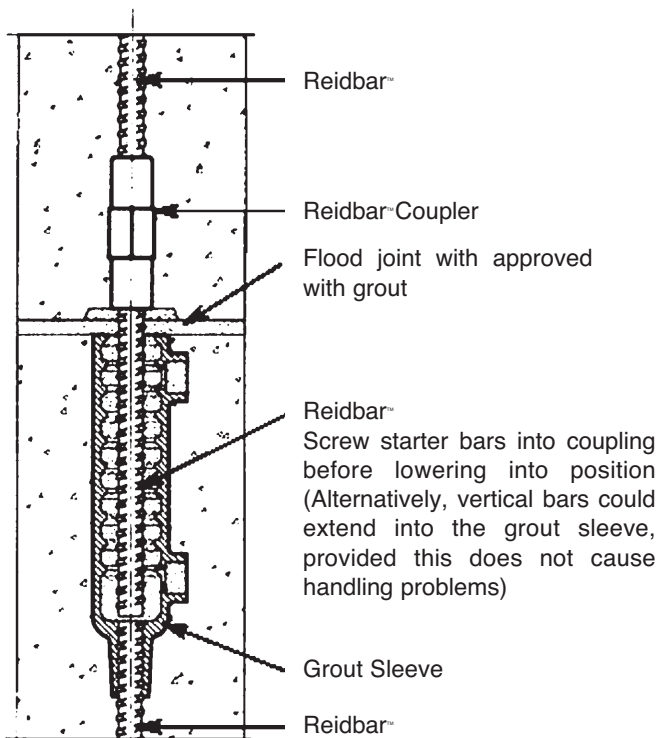
Typical Construction Details

Grout Sleeve to edge of precast panel



Typical Construction Details

Structural joint for two precast panels



Structural joint for rebated precast panels

