

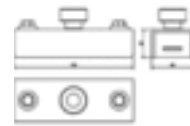
Unlimited options with the press of a button. The magnet consists of a solid welded U-profile with the patented RATEC spring-button technology and integrated KMS magnet, ranging in adhesion forces from 450 to 1900 kg. The KPB provides the ideal solution to your production needs, whether you use plywood or steel forms.

The KPB is adaptable to an unlimited variety of applications, and is designed to accommodate virtually any casting requirement that you may encounter in the future, giving you the greatest number of options and the highest level of flexibility available.

## KPB100MAG

SOLID WELDED U-PROFILE WITH AN INTEGRATED SPRING-LOADED MAGNET, FEATURING TWO BOLTS FOR ATTACHMENTS OR ADAPTERS.

Product Code	Description
KPB1000MAG	450KG adhesive force magnet



## KPB2000MAG

SOLID WELDED U-PROFILE WITH AN INTEGRATED SPRING-LOADED MAGNET, FEATURING TWO BOLTS FOR ATTACHMENTS OR ADAPTERS.

Product Code	Description
KPB2000MAG	900KG adhesive force magnet



## KPB4000MAG

SOLID WELDED U-PROFILE WITH AN INTEGRATED SPRING-LOADED MAGNET, FEATURING TWO BOLTS FOR ATTACHMENTS OR ADAPTERS.

Product Code	Description
KPB4000MAG	1900KG adhesive force magnet

